



## **FTP User Guide**

## Download and Install a FTP Client



You may download a application from:

<http://filezilla-project.org/download.php?type=client>

For installation, please refer to:

[http://wiki.filezilla-project.org/Client\\_Installation](http://wiki.filezilla-project.org/Client_Installation)

More information, please access :

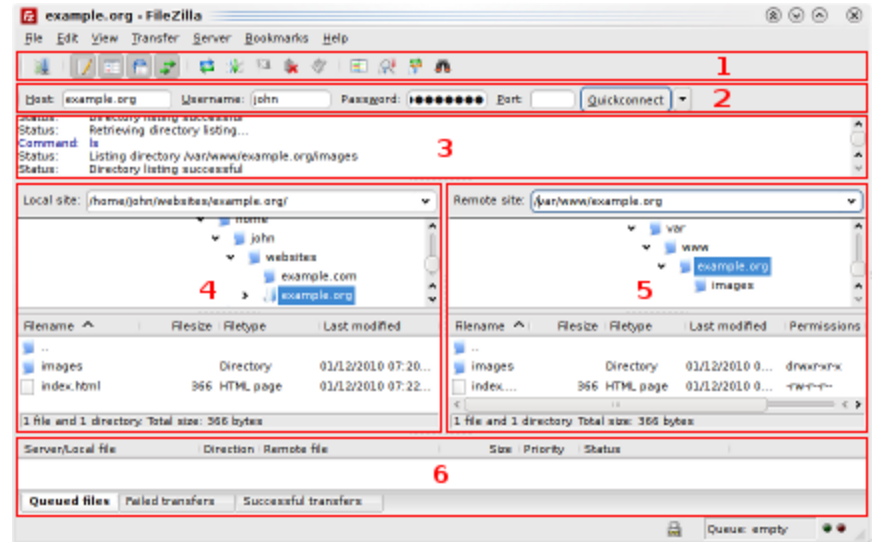
<http://wiki.filezilla-project.org/Documentation>



# Navigating and window layout

Here is a quick introduction:

- (1) “quickconnect” bar
- (2) the message log
- (3) displays transfer and connection related messages
- (4) the left column displays the local files and directories, i.e. the stuff on the PC you're using FileZilla on
- (5) the right column displays the files and directories on the server you are connected to. Both columns have a directory tree at the top and a detailed listing of the currently selected directory's contents at the bottom. You can easily navigate either of the trees and lists by clicking around like in any other file manager
- (6) at the bottom of the window, the transfer queue lists the to-be-transferred and already transferred files

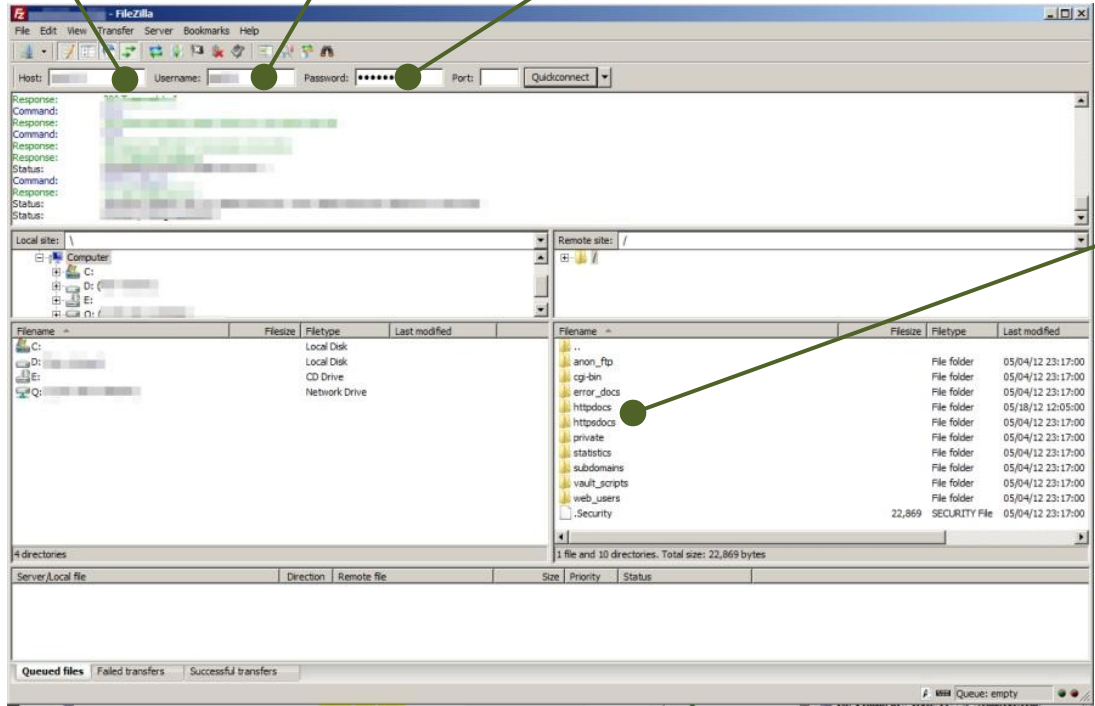


# Upload your website to server (Linux Platform)

Enter your FTP host name

Enter your username

Enter your password



Upload you website under "httpdocs" folder

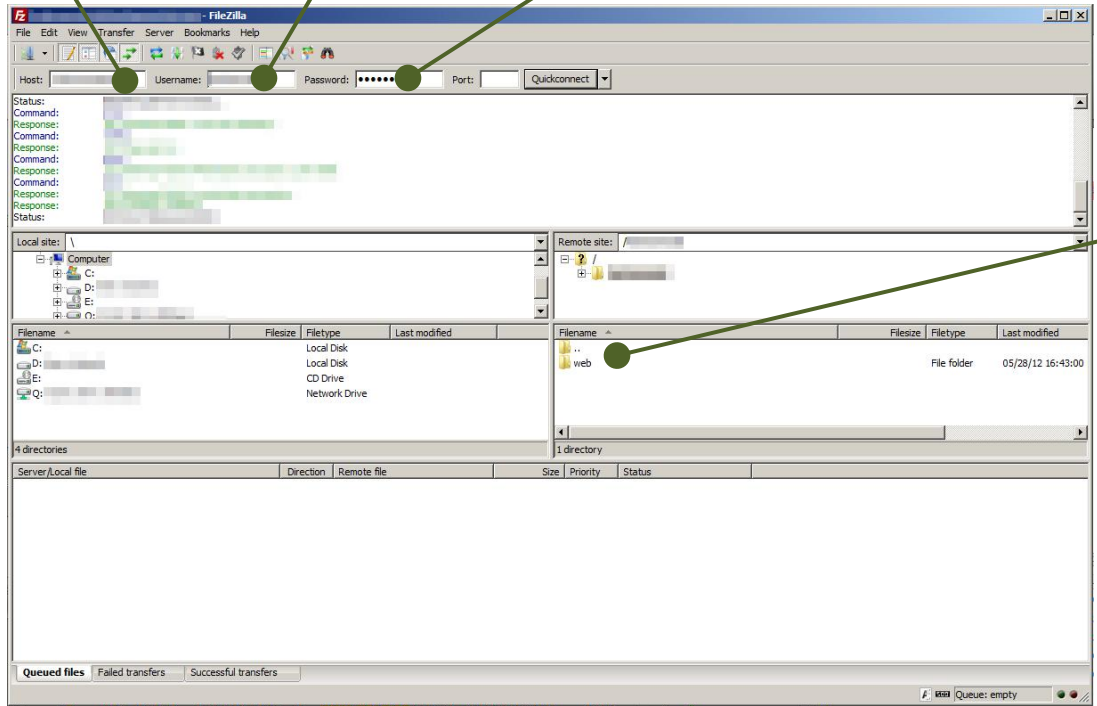


# Upload your website to server (Windows Platform)

Enter your FTP host name

Enter your username

Enter your password



Upload you website under "web" folder



END

